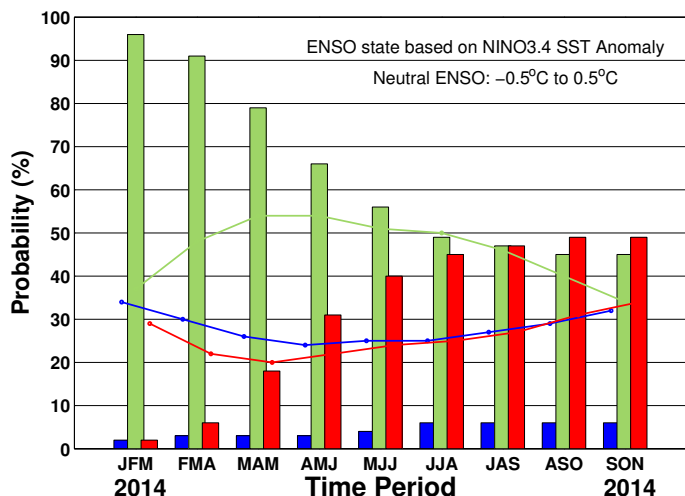


ENSO QUICK LOOK February 06, 2014

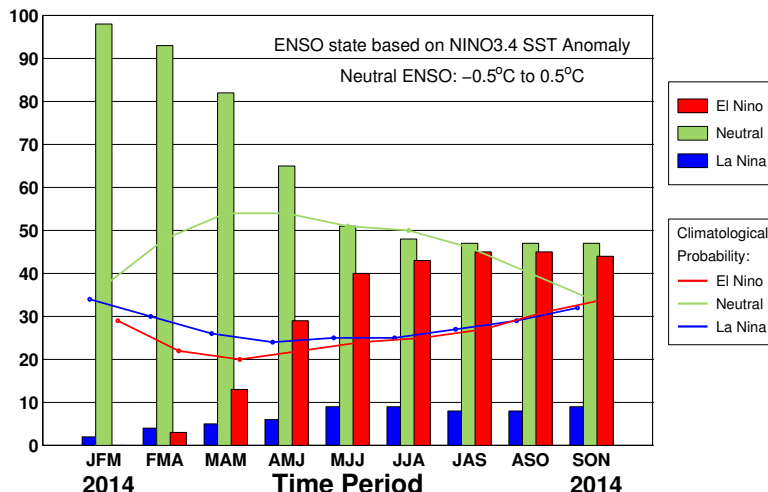
A monthly summary of the status of El Niño, La Niña and the Southern Oscillation, or “ENSO”, based on NINO3.4 index (120-170W, 5S-5N)

During December through early January the observed ENSO conditions have remained neutral. Most of the ENSO prediction models indicate a continuation of neutral ENSO into northern spring 2014. During late spring and summer a warming tendency is seen in both dynamical and statistical models.

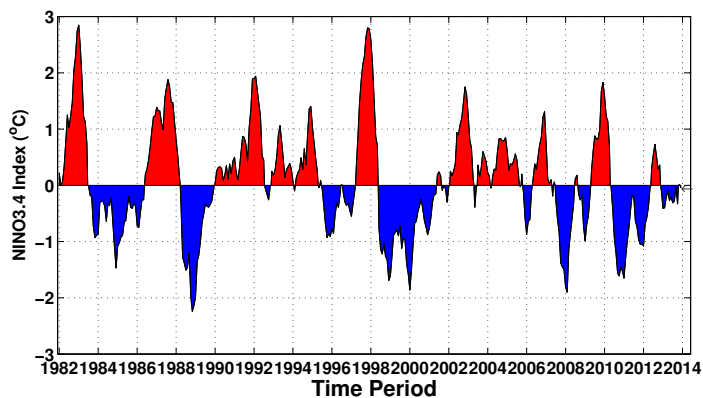
Early-Feb CPC/IRI Consensus Forecast¹



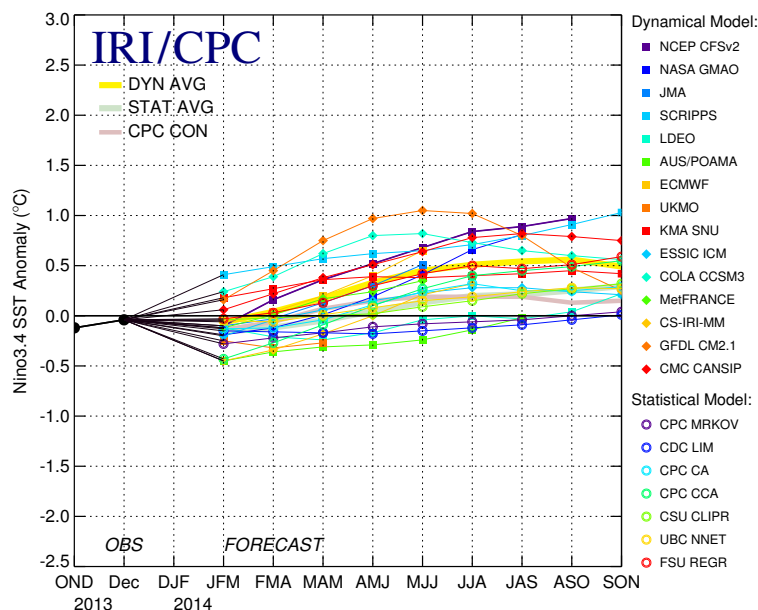
Mid-Jan IRI/CPC Plume-Based Forecast²



Historical Sea Surface Temperature Index



Mid-Jan 2014 Plume of Model ENSO Predictions



Historically Speaking

- El Niño and La Niña events tend to develop during the period Apr-Jun and they:*
- Tend to reach their maximum strength during Dec-Feb
 - Typically persist for 9-12 months, though occasionally persisting for up to 2 years
 - Typically recur every 2 to 7 years

¹Based on a consensus of CPC and IRI forecasters, in association with the official CPC/IRI ENSO Diagnostic Discussion.

²Purely objective, based on regression, using equally weighted model predictions from the plume.